

WARTMANN®



# High Speed Blender

Model WM-1807 HS

[www.wartmann.cooking](http://www.wartmann.cooking)



# Contents

<b>Welcome</b>	<b>4</b>	Switching on the high speed blender	10-11
		Run a pre-set menu	11-12
<b>Important</b>	<b>5</b>	Run at a fixed speed	12
Only suitable for domestic purposes	5	Pulse operation	12
Supervise close-by children	5		
People with disabilities	5	<b>Using the tamper</b>	<b>13</b>
Check electrical connections	5		
Avoid contact with water	5-6	<b>Operational guidelines</b>	<b>14-15</b>
Keep away from heat sources	6		
Careful: rotating blades	6	<b>Do not use when</b>	<b>16</b>
Use original accessories	6		
		<b>After use</b>	<b>17</b>
<b>Food safety</b>	<b>7</b>	Cleaning	17
		Storing	17
<b>Overview of the high speed blender</b>	<b>8</b>	Maintenance	17
Parts Discription	8		
Control panel	9	<b>Recycling the high speed blender</b>	<b>18</b>
		<b>Appendix: troubleshooting</b>	<b>19</b>
<b>Using the high speed blender</b>	<b>10</b>		
Filling the blender jar	10		
Placing the lid and measuring cup	10		

# Welcome

## **Congratulations on your purchase**

Wartmann hopes that you will enjoy your new high speed blender. Using the Wartmann® high speed blender, you can make the richest and creamiest smoothies and soups, grind coffee beans or make a peanut butter.

The Wartmann® high speed blender is also great for those who wish to consume more raw food. It will break down the food into tiny parts that are easily consumed, without any strings of fibre that may get in between your teeth.

## **A good choice**

Thanks to a clever design, the Wartmann® high speed blender is not only compact, but also very powerful. The Wartmann® high speed blender can be easily operated with a dial knob.

The blender jar of the Wartmann® high speed blender is made from transparent, unbreakable,

Tritan™, and therefore 100% BPA-free. The blender jar has a blade that is made from a high quality stainless-steel that is hardened for endurance and a long lasting sharpness.

Following the instructions in this user manual you will enjoy your Wartmann® high speed blender for many years.

## **Handy accessories**

Wartmann® sells a series of optionally accessories for this high speed blender; including a vacuum pump, drinking jars and a temperature stick.

The Wartmann® vacuum pump efficaciously removes the air from the Wartmann® high speed blender jar. By reducing the amount of air in the blender jar before blending, the amount of decolourisation of the juices will be less for certain fruits and vegetables.

# Important

This instruction manual contains information for the use and maintenance of your Wartmann® high speed blender. Read this instruction manual carefully before using the Wartmann® high speed blender and keep it for possible later consultation.

## **Only suitable for domestic purposes**

This device is exclusively intended for common household indoor use. In case of (semi)-professional or incorrect use, usage not in accordance with the instructions in the manual, or self-performed repairs, the warranty expires and Wartmann® will decline any responsibility for any damage caused by this.

## **Supervise close-by children**

Children should be supervised to ensure that they do not play with the Wartmann® high speed blender. The Wartmann® high speed blender shall not be used by children. Keep the Wartmann® high speed blender and its power cord out of reach of children.

## **People with disabilities**

The Wartmann® high speed blender can be used by persons with reduced physical, sensory or mental capabilities or lack of experience and knowledge if they have been given supervision or instruction concerning the use of the Wartmann® high speed blender in a safe way and if they understand the hazards involved.

## **Check electrical connections**

Check if the voltage indicated on the Wartmann® high speed blender conforms to the local mains voltage before connecting the Wartmann® high speed blender. In case the plug, power cord or the Wartmann® high speed blender itself is damaged, repairs must be carried out first or the relevant part should be replaced by a qualified service centre.

## **Avoid contact with water**

The Wartmann® high speed blender contains electrical and mechanical parts. Make sure that

water can never enter into the Wartmann® high speed blender to prevent an electric shock and/or damage to the Wartmann® high speed blender. Never rinse the Wartmann® high speed blender under the tap and do not immerse the Wartmann® high speed blender, or its power cable, in water. Do not operate, or plug-in, the Wartmann® high speed blender with wet hands. Contact a qualified service centre if there is water in the blender base.

#### **Keep away from heat sources**

Do not expose the Wartmann® high speed blender to a source of heat such as a radiator or sun shining through a window.

#### **Careful: rotating blades**

Keep hands and utensils out of the container while the motor is running to prevent the possibility of severe personal injury and/or damage. Never leave the Wartmann® high speed blender unattended when it's plugged-in a power source.

#### **Use original accessories**

This manual may refer to the use of Wartmann® accessories. For the use of accessories from other suppliers, other instructions may apply.



## Food Safety

Always check if food is spoiled, before consuming or blending it. Only use fresh ingredients for blending, or ingredients that are still suited for consumption and will be consumed immediately after preparation.

We advise to mention the date of packaging on any prepared food or drink that is packaged or bottled for storage after blending.

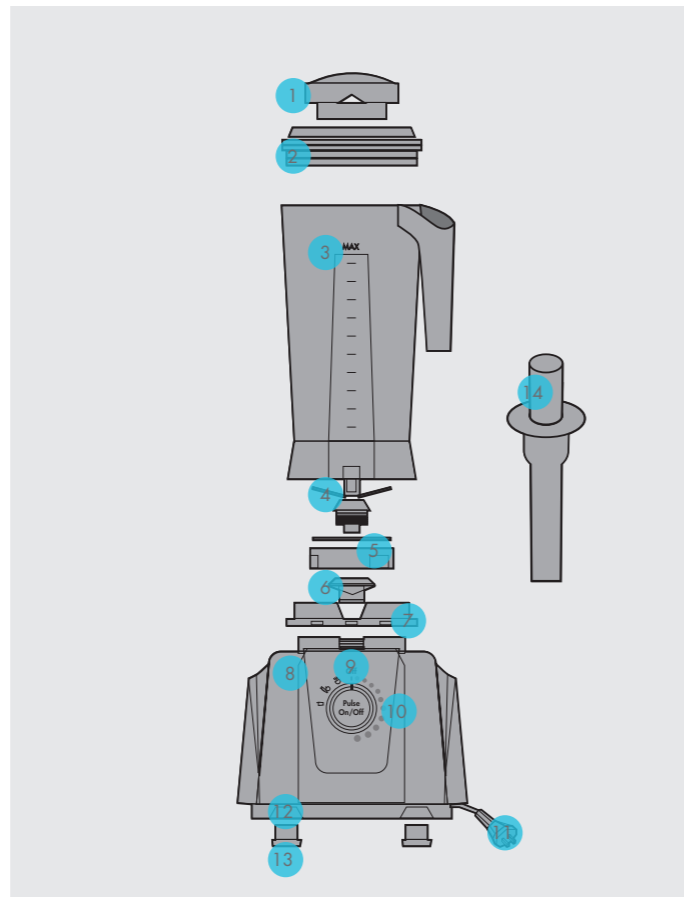
Vacuum blending with vacuum packaging may ensure that the quality of food or drink is retained longer, provided it is also properly cooled. How much longer you can preserve the food or drink depends on different factors, such as the type and quality of the food at the time of packaging.



# Overview of the high speed blender

## Parts Description

- 1 Measuring Cup
- 2 Lid
- 3 Blender Jar
- 4 Blade Assembly
- 5 Blade Mount
- 6 Drive Gear
- 7 Blender Jar Mat
- 8 Blender Base
- 9 Dial knob
- 10 Stainless Steel Plate
- 11 Power Cord
- 12 Base Cover
- 13 Silicon Feet
- 14 Tamper



## Control Panel

### 1. Dial knob

The dial knob is used to set the speed of the Wartmann® high speed blender or to select a pre-set menu.

### 2. Pulse & ON/OFF button

When the dial knob is in the OFF position then pressing this button will start the Pulse operation. When the dial knob is on a menu position then pressing this button will start/stop the selected menu.

### 3. Status indicator light

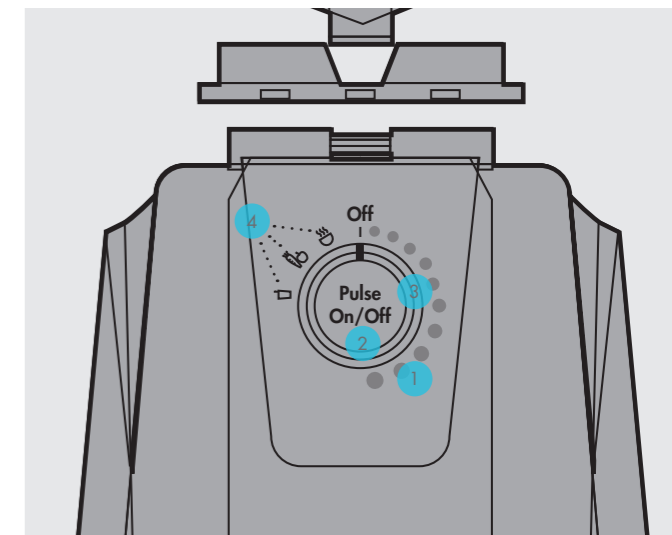
The status indicator light shows the status of the blender:

- The light is out:  
the blender is in energy-saving mode
- The light is red:  
the blender is in stand-by mode (ready to use).
- The light is white:  
the blender is running.
- A blinking red light:

the thermal protection is activated.  
The red light flashes 2 times per second.

### 4. Menu Icons

There is a menu icon for each of the 3 available pre-set menus. A light indicates the selected menu. The available menus are soup, vegetables and smoothies.



# Using the high speed blender

## Unpacking the high speed blender and preparations for first use

Take the Wartmann® high speed blender out of the box and remove all packaging materials. Place the Wartmann® high speed blender on a horizontal flat surface in a location where the Wartmann® high speed blender cannot tip over, not even when passing by. For good ventilation, do not place a cloth underneath the Wartmann® high speed blender.

## Filling the blender jar

Always run the Wartmann® high speed blender with a load in the blender jar. To prevent spillage, don't put liquid in the blender jar above the MAX line. Run only with the lid in place. When processing hot beverages, properly secure the lid and measuring cup in its place to avoid getting burned by the spraying of hot liquids.

## Placing the lid and measuring cup

Insert the measuring cup to the lid by aligning the two taps to the grooves of the lid and twist to lock it at the bottom position. Then push in the lid to the blender jar to close it. To open, pull up the flap of the lid.

## Switching on the high speed blender




Insert the plug of the Wartmann® high speed blender into a wall socket. Check that it is properly secured; a loose plug may lead to overheating or an electrical shock. Now put the blender jar on the base unit. The status indicator light will turn red; the Wartmann® high speed blender is now in stand-by mode and ready for use.

*If the Wartmann® high speed blender is kept idle for 3 minutes the status indicator light will go out. The Wartmann® high speed blender is then in*

*energy-saving mode. Pressing any key will bring the Wartmann® high speed blender back into stand-by mode.*

## Run a pre-set menu

The Wartmann® high speed blender has 3 pre-set menus:

Icon	Menu	Solution
	Soup	Increase to speed 7 in 7 seconds, then increase to speed H in 3 seconds, and keep at this speed until finish. The total duration is 8 minutes.
	Vegetables	Speed H for 30 seconds, stop 2 seconds; speed 6 for 10 seconds, stop 2 seconds. Speed H for 60 seconds, stop 2 seconds; speed 6 for 10 seconds, then finish. The total duration is 1 minute and 56 seconds.
	Smoothie	Soft start to Speed H for 8 seconds and then stop for 2 seconds. Repeat the cycle until the total duration time is 30 seconds.



The Wartmann® high speed blender should be first in stand-by mode to run a pre-set menu. Select and rotate the dial knob from OFF position to the desired pre-set menu, then press the ON/OFF button. The Wartmann® high speed blender will automatically run the selected menu. The Wartmann® high speed blender can be stopped at any time by just pressing the ON/OFF button. When the menu is finished the Wartmann® high speed blender will automatically stop and return to the stand-by mode.

#### Run at a fixed speed

The Wartmann® high speed blender has 10 different speed settings in addition to a Pulse setting. The Wartmann® high speed blender should be first in stand-by mode to run at a fixed speed.

Turn the dial knob gradually from the OFF position clockwise to the required speed setting. The motor starts and increases to the set speed, the status

indicator light will go white. After 10 minutes the motor will automatically stop. Turning the dial knob back to the OFF position will also stop the motor. Always turn the dial knob back to the OFF position before doing any other task.

#### Pulse Operation

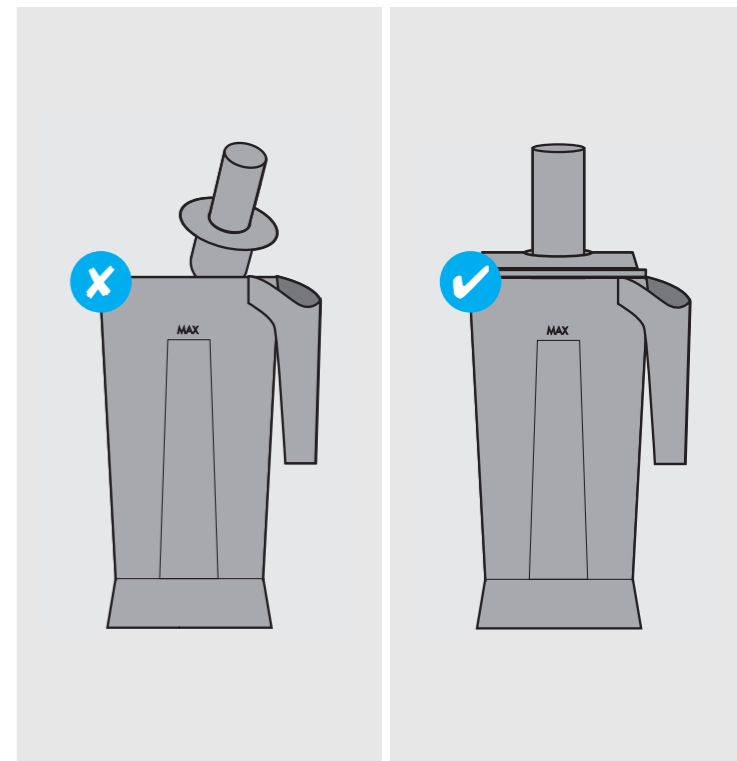
To run a high speed pulse, the Wartmann® high speed blender should be first in stand-by mode with the dial knob pointing to the OFF position.

Press, and keep pressing, the PULSE/ON/OFF button. The motor starts and increases to the maximum speed, the status indicator light will go white. Releasing the PULSE/ON/OFF button will stop the motor and the Wartmann® high speed blender will return to the stand-by mode.

## Using the tamper

Use the tamper to press any sticky leaves or vegetables down towards the blade. The tamper can also be used to remove any air cavities in a thick paste.

To use the tamper first place the lid, with the measuring cup removed, on top of the blender jar. Insert the tamper through the opening in the lid with the longest leg inside the blender jar. The length of the tamper matches with the height of the blender jar. Therefore always keep the lid on the blender jar and never use any other object then the tamper supplied with the blender jar. Any other object may bring irreparable damage to the Wartman™ high speed blender.



## Operational guidelines

Keep hands and utensils out of the container while the motor is running to prevent the possibility of severe personal injury and/or damage.

During operation, close the lid tightly to avoid scalding due to spraying of hot liquids.

If you notice a scorch smell from the Wartmann® high speed blender, then stop the Wartmann® high speed blender immediately. The smell may be caused by the abrasion at the rubber cushion base if it is not properly assembled.

When the Wartmann® high speed blender finishes, please wait until the blade assembly comes to a complete stop before taking up the blender jar. Otherwise, the drive gear may be damaged. Please put liquid and soft food before putting in hard food or ice cubes.

When blending thick and sticky food using high speed, please start the operation at low speed. If the turning is still idle, disconnect the power and stir the blender jar using a rubber stirrer to drive out the air capsule trapped in the food. Then close the lid and switch on to proceed the operation.

In making hot beverage such as soybean milk or a hot soup, please check whether the lid is secured tightly to the blender jar to prevent it from falling. It is advisable to start the Wartmann® high speed blender at a low speed setting and then increase the speed gradually, or use the PULSE mode.

When making sauces (e.g. almond sauce, jam and sesame sauce), stuffing and nuts, put in between 2 and 3 cups of ingredients. The amount should neither be too large or too little. Keep the blending time below 2 minutes to prevent any burnt smell due

to overheating. Too much ingredients may lead to overloading and overheating of the motor. In this case, wait until the motor temperature drops before using the Wartmann® high speed blender again.

Do not operate the Wartmann® high speed blender for more than 10 minutes at a time.





## Do not use when

The Wartmann® high speed blender may not be operated when:

- The blender jar is not firmly placed on the base.
- The dial knob was turned in variable speed selection range before the blender jar was firmly placed on the blender base.
- The blender jar was taken from the blender base during operation and then put back on. If so, first turn the dial knob back to the OFF position. Then place the blender jar firmly on the blender base. Now the Wartmann® high speed blender resets and it can be normally used again.
- If the food is too thick, or there is too less liquid in the jar, the motor may be dragged to a low speed. If this continues for a prolonged period, then the temperature monitoring system will automatically stop the motor. The status indicator

light will flash red two times per second. If this happens, then unplug the Wartmann® high speed blender and put it a place with good ventilation where it can cool down for 45 minutes. The system will reset and after 45 minutes the Wartmann® high speed blender can be used again.



## After use

### Cleaning

The blender jar can be rinsed with water. It can also be cleaned by filling 2 cups of water in the blender jar, close the lid and then operate the Wartmann® high speed blender in Pulse mode. Then pour out the water and dry it with a soft cloth.

Clean the surface of the blender jar with a microfiber cloth or sponge. The measuring cup can be disassembled for cleaning. After cleaning, put the blender jar on the side or upside down to dry. Do not immerse the whole blender jar in water.

Unplug the Wartmann® high speed blender from the wall outlet. Clean the blender base with a microfiber cloth. Never immerse the blender base in water or any other liquid.

### Storing

After the blender base and blender jar have been cleaned you can store them away. Check and wipe

away any residual water with a dry cloth if the blender jar is stored in an upside down position. Do not leave the blender jar close to the sink or basin to avoid water spraying to the bottom part of the blender jar. This may cause the rusting of the bearing which will affect the performance of the blender.

### Maintenance

For an optimal lifespan of your Wartmann® high speed blender it should not be run for more than 10 minutes continuously.



# Recycling the high speed blender

Deliver the Wartmann® high speed blender to a collection point for the recycling of electrical equipment when it is at the end of its life cycle. The Wartmann® high speed blender should not be disposed of along with regular household rubbish.



# Appendix troubleshooting

In general the Wartmann® high speed blender performs adequately. Should however a malfunction occur, then please first try the troubleshooting recommendations mentioned below.

Symptom	Possible cause	Solution
The high speed blender does not work. The status indicator light is not burning.	The power cord is damaged or not properly in the socket.	Check if the power cord is undamaged and then insert the plug firmly into a power socket.
	There is no voltage on the socket.	Check with another electrical device that the socket has power; if so try the high speed blender again.
	The high speed blender is in energy-saving mode	Press the ON/OFF switch.
	The high speed blender is broken.	Send the high speed blender in for repair.
The status indicator light is red, but the high speed blender does not start.	The jar is not firmly placed on the base.	Turn the dial knob back to the OFF position, then place the jar firmly on the blender base.
	The jar was taken of the blender base during operation.	Turn the dial knob back to the OFF position, then place the jar firmly on the blender base.
The status indicator light is flashing red twice per second.	The blender is overheated,	Unplug the blender and put it at a place with good ventilation where it can cool down for 45 minutes.
There is a scorch smell coming from the blender.	The abrasion at the rubber cushion base if it is not properly assembled.	Stop the operation immediately. Check the rubber cushion base, if necessary send in for repair.
There is smoke coming out of the blender.	The blender is broken.	Unplug the blender immediately and sent it in for repair.

WARTMANN®



# High Speed Blender

Model WM-1807 HS



Model WM-1807 HS | Voltage 220-240 volt / 50 Hz  
Power 1250 Watt | Weight 4,2 kilogram  
Dimensions 229,5 x 220 x 465,5 mm (L x W x H)

[www.wartmann.cooking](http://www.wartmann.cooking)